

*You are welcome to knit this pattern for loved ones. Pattern may be printed for personal use. Do not reproduce and sell the pattern itself.*

## Knights Hospitaller Hot Water Bottle Cover



Needles: 4mm straight needles

Yarn: Moda Vera Biscay. 1 x 100g ball each in grey, black, and white.

Tension: 20 sts x 25 rows = 10cm<sup>2</sup>

Notions: Stitch markers, scissors.



**This pattern is designed to fit a standard 2 litre hot water bottle.**

Using grey, cast on 44 stitches.

Row 1 (RS): [k1, kfb] to end. 66 sts.

Row 2: P all sts.

Row 3: \*k2, [k2, kfb] six times, k2. Repeat from \* two more times. 84 sts.

Work rows 4-14 in stocking stitch, beginning with a P row.

Row 15: K29, pm, work row 1 of Knights Hospitaller Shield Chart, pm, K29.

Continue working in stocking stitch as set (working in grey either side of the markers and following the chart in between markers) until chart is completed, on row 58 (WS). Remove markers on the next row.

Using grey, work in stocking stitch for 12 rows.

Next row: [k2, k2tog] to end. 42 sts.

Next row: P all sts.

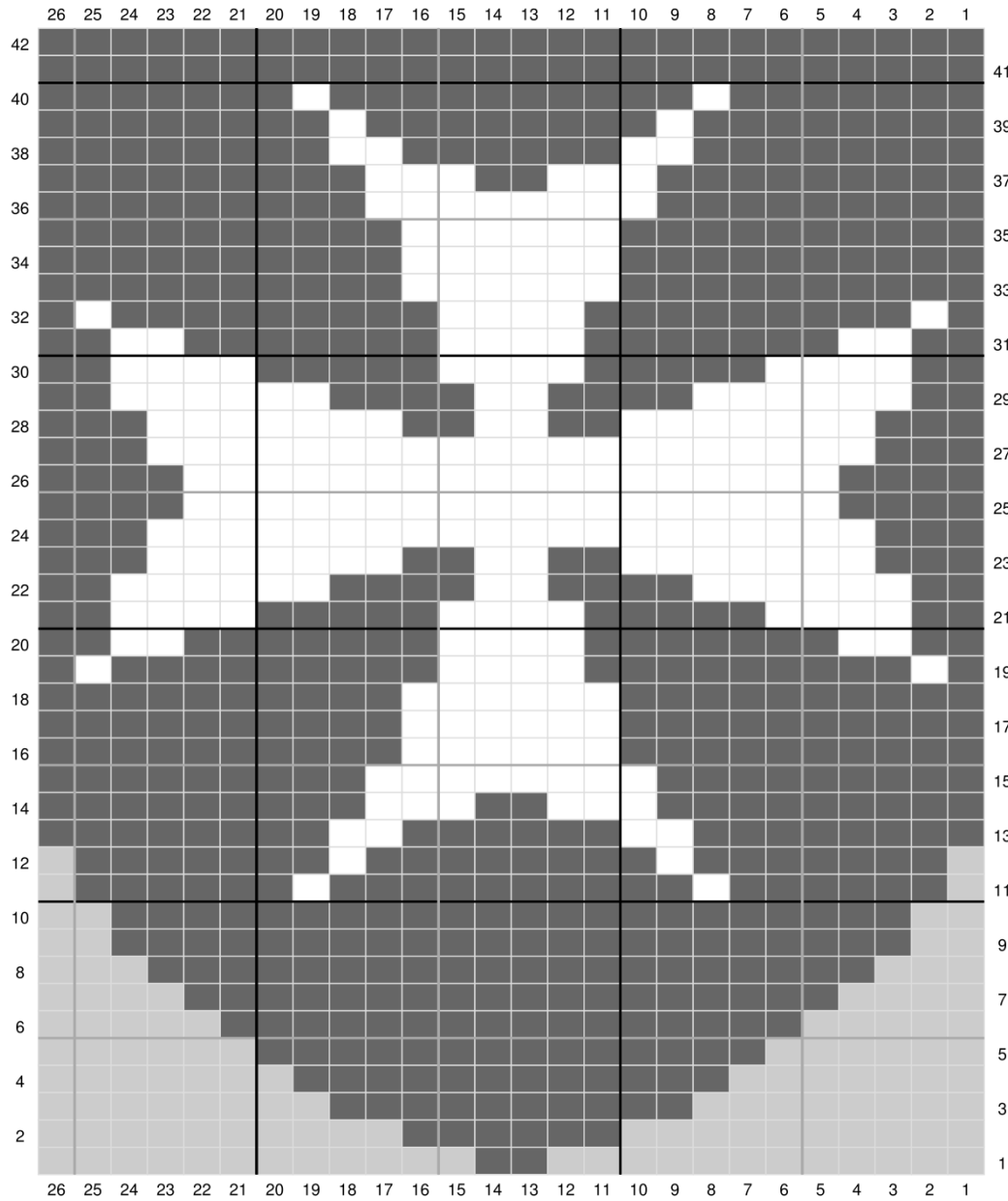
Next row: [k6, k2tog] seven times, k6, k3tog, k1. 36 sts.

Work in 1x1 rib for 25 rows.



Cast off using sewn cast off. With WS facing and using mattress stitch, sew back seam. Thurn piece RS out. Keeping the back seam lined up with the centre of the cross, sew bottom seam using a shoulder seam. Weave in ends.

## Knights Hospitaller Shield Chart



- White
- Black
- Grey

Designed with Stitch Fiddle  
www.StitchFiddle.com