

You are welcome to knit this pattern for loved ones. Do not reproduce and sell the pattern itself.

EASY BABY BLANKET – KNIT-ALONG – SQUARE 9 – INTARSIA FLOWER



Pattern

This rectangle is worked in stocking stitch throughout. This means:

All RS (odd numbered) rows: Knit all sts

All WS (even numbered) rows: Purl all sts

Cast on 32 sts. Follow Flower Chart to end. Cast off all sts. Weave in ends. Steam block to finish.

Dimensions of finished rectangle: 17cm x 24cm

Yarn: 31 metres Value Ball Gradients (colour scheme "Naturals") in cream and 14 metres in light brown

Needles: 4mm straight needles

Tension: 19 sts x 26 rows = 10cm² in stocking stitch

Notions: Craft scissors, tapestry needle, row counter

A Note on Colours Used

This is a knit-along pattern for one square of 16 to go into a baby blanket pattern. This project uses five colours:

Colour 1: Cream

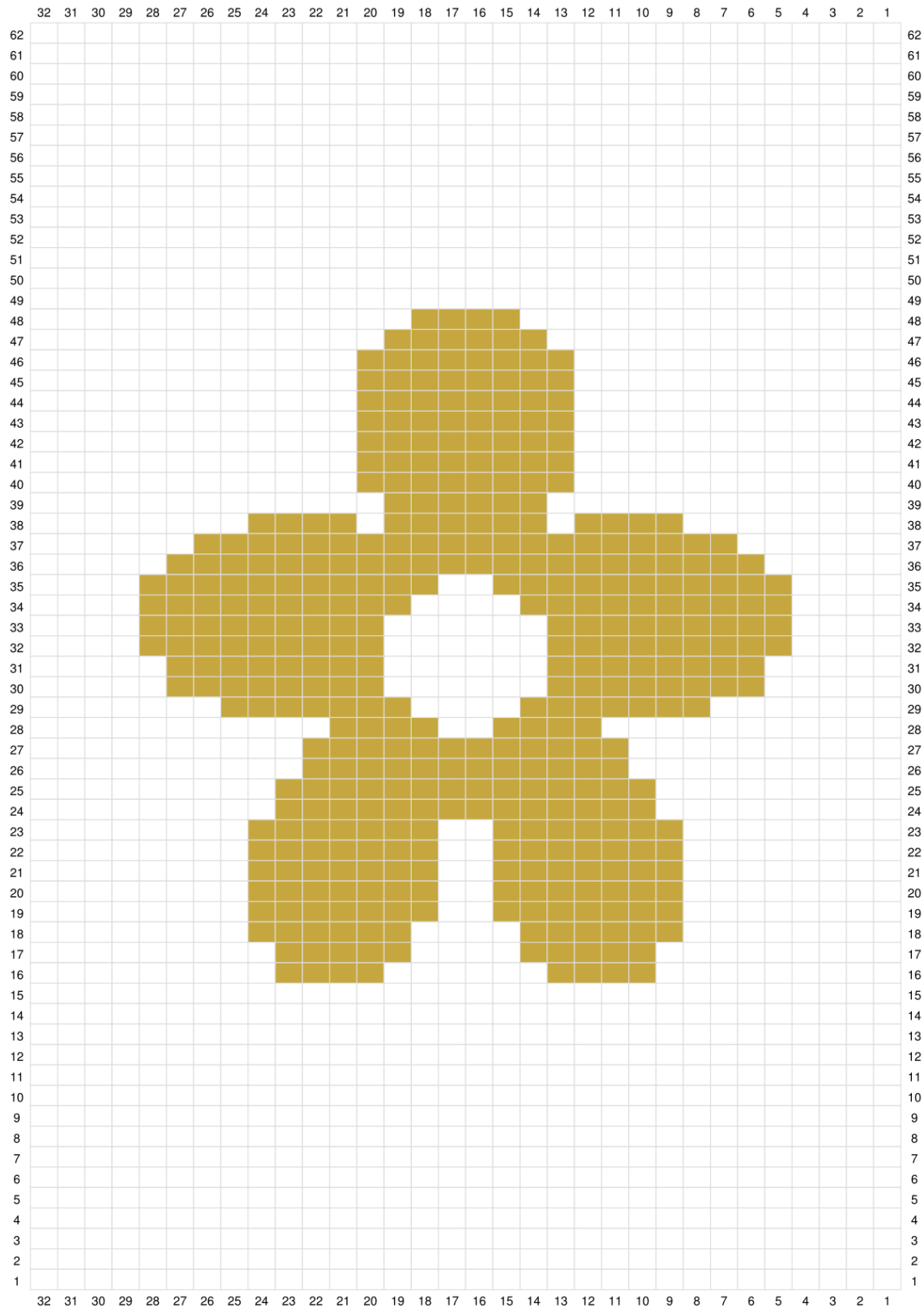
Colour 2: Fawn

Colour 3: Light brown

Colour 4: Medium brown

Colour 5: Dark brown

Flower Chart



Designed with Stitch Fiddle
www.StitchFiddle.com